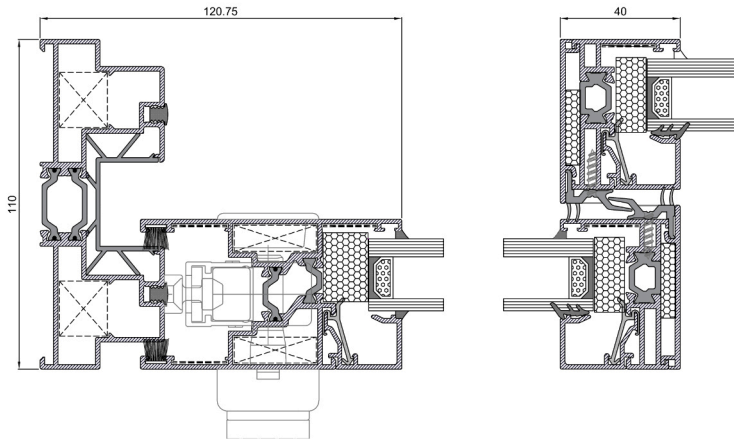


XS-110



The XS-110 system with its double opening possibility, lifting or in-line, provides a solution for small openings as well as large and heavy windows. Its minimalist 40 mm central node and the possibility of recessing the frames in the wall make it the ideal solution for the most avant-garde façades.

Technical data

Geometry and glazing

2-rail frame	110 mm
3-rail frame	170 mm
Sash	50 mm
Thickness	1,5 mm
Polyamide frame	24 mm
Polyamide sash	24 mm
Sash glazing thickness	6 - 34 mm

Maximum dimensions and weights*

Width	3.000 mm
High	2.500 mm
In-line hardware	200 Kg/hoja
Lift-up hardware	250 Kg/hoja

*Consult maximum dimensions and weight according to typology.

Categories achieved at test centre :

Protection against atmospheric agents | Conducted by a notified institution

Reference test: window with 2 sliding sashes 1230x1480 mm, glass 6-18-6

Air permeability

Test according to UNE-EN 1026:2017
 Clasificación according to UNE-EN 12207:2017



Water tightness

Test according to UNE-EN 1027:2017
 Clasificación according to UNE-EN 12208:2000



Wind resistance

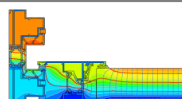
Test according to UNE-EN 12211:2017
 Clasificación according to UNE-EN 12210:2017



Thermal transmittance | Energy efficiency:

Uf = 3,6 W/m²K

Uw ≥ 1,2 W/m²K *



Window acoustic insulation:

Rw (C;Ctr):

(-1;-3)*

* Calculated value according to Norma UNE-EN ISO 10077-2:2020 UNE-EN ISO 10077-1:2017 for 2 balcony sash window measuring 3000x2100 mm with triple low emissivity glass. Ug 0,5 W/m²K.

* Calculated value for a 2 sash window measuring 1230x1480 mm with glass 44 (-1;-5), consult Extrugasa for other types of glass or dimensions.

